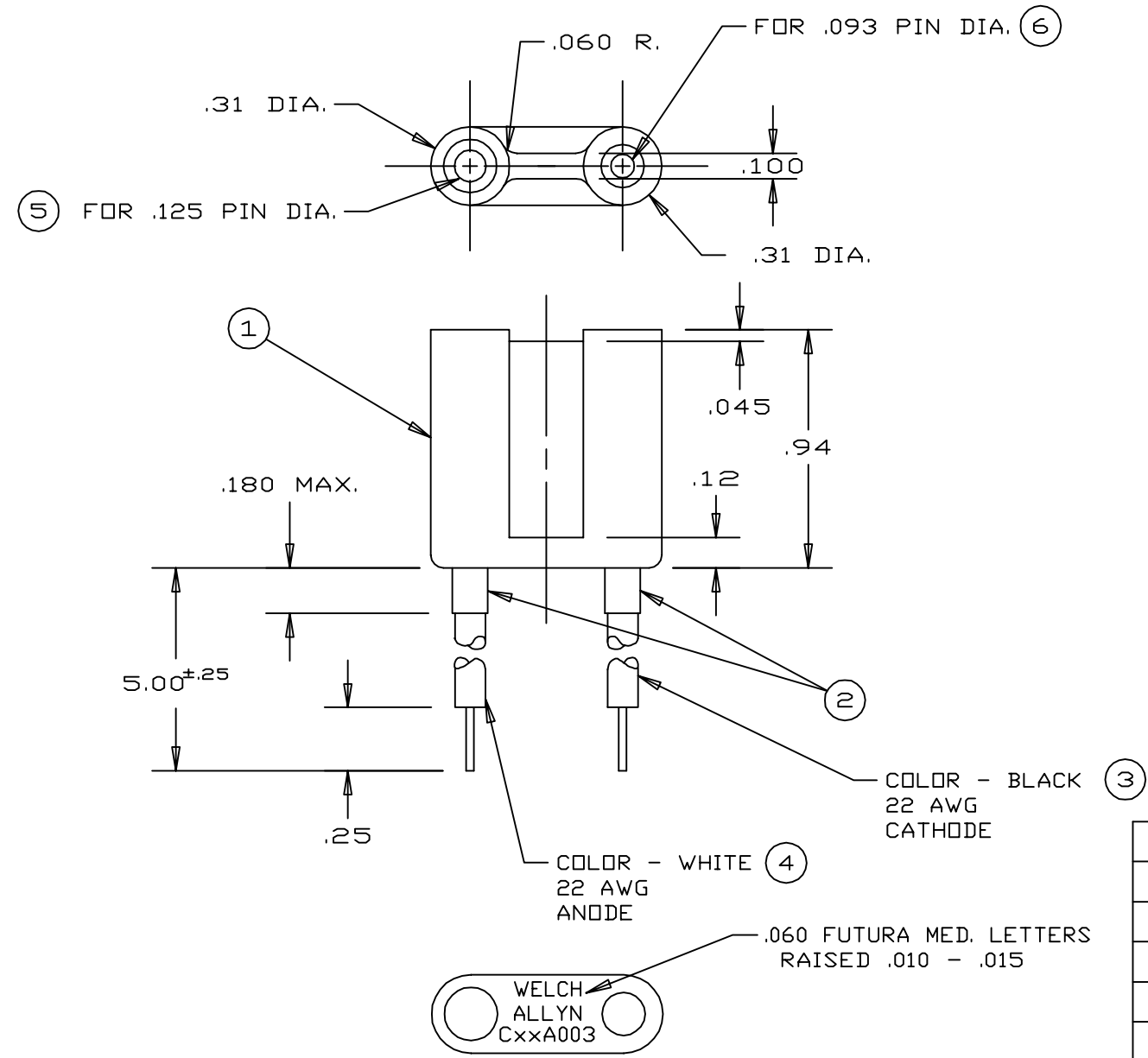


REV	REVISION DESCRIPTION	ECN	INIT	DATE	APPROVAL
A	RELEASE TO PROD	0-282	PMB	7/15/96	D RUTAN

PROPRIETARY TO WELCH ALLYN  
INTERNAL USE ONLY, DO NOT COPY OR DISTRIBUTE



QTY	QTY	QTY	QTY	ITEM OR SYMBOL	PART NUMBER	DESCRIPTION
1	6			S30073		MOLEX CONNECTOR (.093)
1	5			S30074		MOLEX CONNECTOR (.125)
1	4			999088-84		INSULATED WIRE PIGTAIL 22 AWG WHITE
1	3			999088-83		INSULATED WIRE PIGTAIL 22 AWG BLACK
2	2			999321-15		INSULATION SLEEVE
1	1			S30075		BALLAST SIDE CONNECTOR HOUSING

MATERIAL:

FINISH:

504	503	502	501
-----	-----	-----	-----

ITEM OR SYMBOL	PART NUMBER	DESCRIPTION
LIST OF MATERIAL		

UNLESS OTHERWISE SPECIFIED:  
DIMENSIONS IN mm (WHEN USED) ARE IN ( ).  
DIMENSIONS INCLUDE PLATING.  
REMOVE BURRS & SHARP EDGES.  
THREADS ARE UNIFIED SERIES  
AND INCLUDE PLATING.  
EXTERNAL THDS = CLASS-2 A  
INTERNAL THDS = CLASS-2 B

UNLESS OTHERWISE SPECIFIED DIMENSIONS ARE IN INCHES		
TOLERANCES ON:		
BASIC DIMENSION	.XX	.XXX
UP TO 6	± .02	± .005
6 TO 24	± .03	± .010
ABOVE 24	± .06	± .015
ANGLES: ± 1/2 DEGREE		
DO NOT SCALE		

APPROVAL SIGNATURES			
Drawn	date	Approved	date
PM BARAN	6/12/96	R MINDE	6/25/96
Checked	date	Quality	date
WK MOULTON	6/13/96	EH WOONTON	7/15/96
		Rel. for Prod.	date
		D RUTAN	7/15/96

WELCH ALLYN, INC. SKANEATELES FALLS, N.Y. U.S.A.	
TITLE: <i>BALLAST SIDE CONNECTOR</i>	
B	DRAWING NO. <i>C05A003</i>
SCALE	1.5:1
REV. <i>A</i>	PAGE 1 OF 2